

YL8627301

MOTORISED CHANGEOVER SWITCH 1-0-2 3P 100A INCOMING ON BOTTOM. 80-230VAC



Code

007YL8627301

EAN

8430892333276

Product description

Motorised changeover switch 1-0-2 , 3 poles 100A with motor unit supply 80-230VAC . The supply incoming cables are connected on the bottom side of the unit and the load outgoing cables are connected on the top side. Size D2 dimensions 147x178x113, includes auxiliary contact 12A. Back plate mounting. Built-in internal links, mechanical and electrical interlock. Local emergency operation, includes removable padlockable handle. Display for switch position indication and operation counter. Impulse control logic. Protection against supply voltage failure . Cable clamp connection for wires 16-50mm².

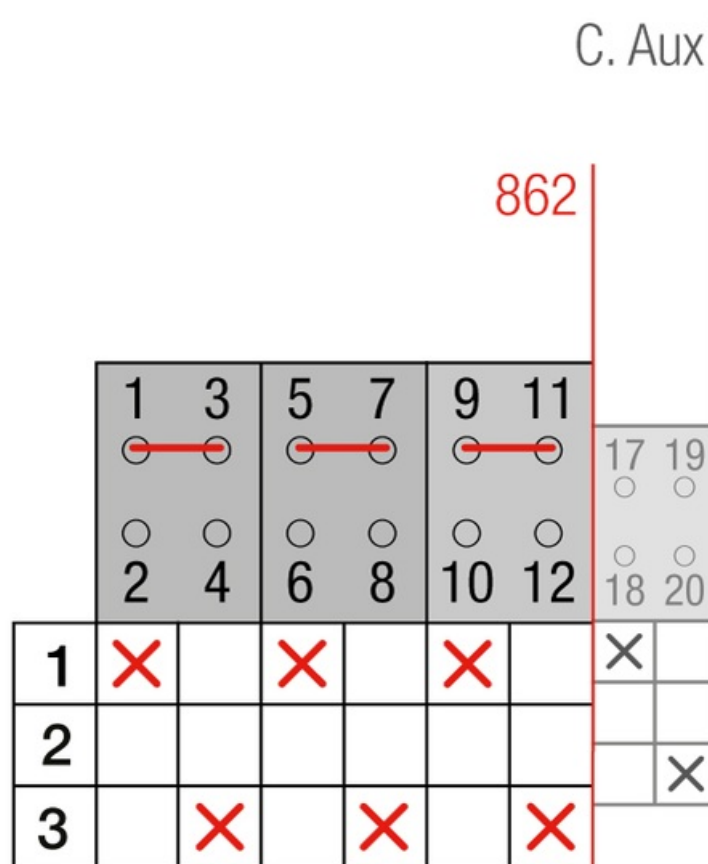
Logistic data

Customs code	85365080
ETIM code	EC000216

Technical data

Poles	3
Y5 Type	86
Supply	80-230V AC

Connection



Dimensions

